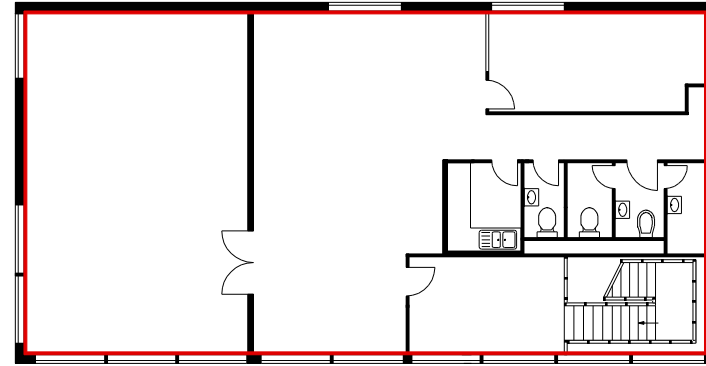



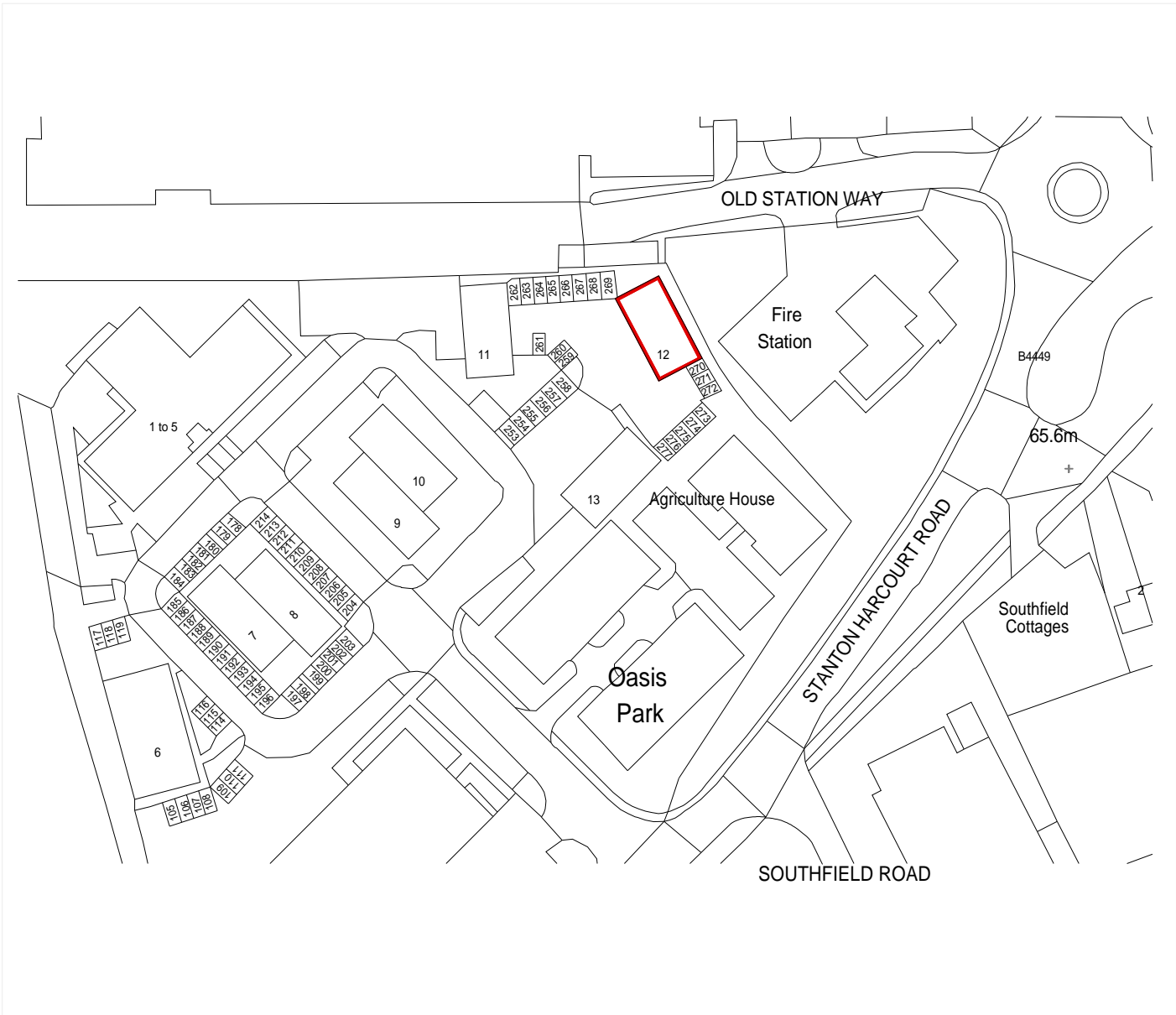
GROUND FLOOR



FIRST FLOOR

APPROX. GROSS INTERNAL AREA *
3540 Ft² - 328.87 M²

<p>Property Details: UNIT 12 OASIS BUSINESS PARK EYNHAM OXFORDSHIRE OX29 4TP</p>		<p>Surveyed and Drawn By: BKR Hideaway Work Space 1 Empire Mews London SW16 2BF</p>
<p>SCALE 1:200 @ A4</p>		<p>Tel: 0345 257 2023 info@bkrffloorplans.co.uk www.bkrffloorplans.co.uk</p>
<p>Plans Drawn: 18.06.2020</p>		<p>© BKR 2020</p>



Property Details:
UNIT 12
OASIS BUSINESS PARK
EYNHAM
OXFORDSHIRE
OX29 4TP

SCALE
1:1250 @ A4

Plans Drawn: 18.06.2020



Surveyed and Drawn By:
BKR

Hideaway Work Space
 1 Empire Mews
 London
 SW16 2BF

Tel: 0345 257 2023
info@bkrfloorplans.co.uk
www.bkrfloorplans.co.uk

© BKR 2020