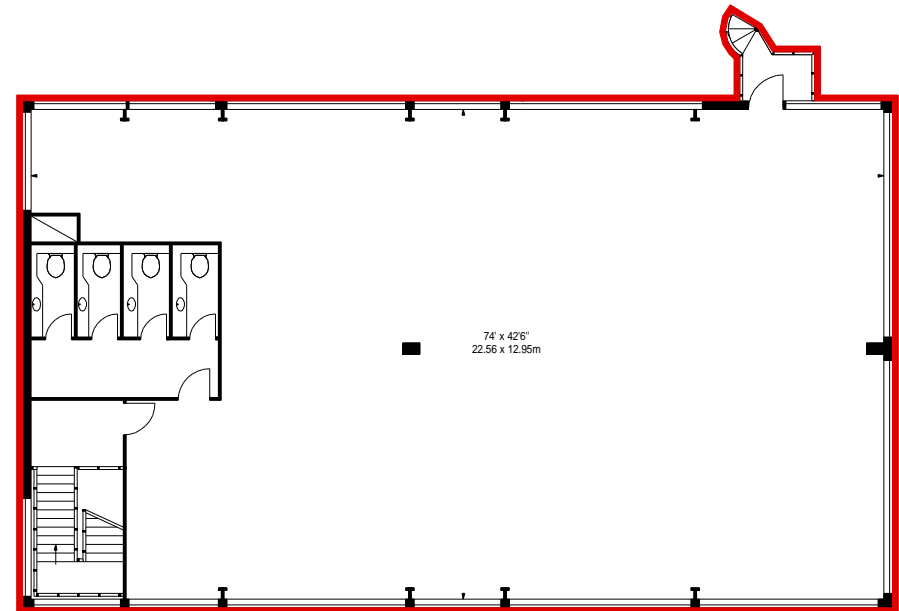



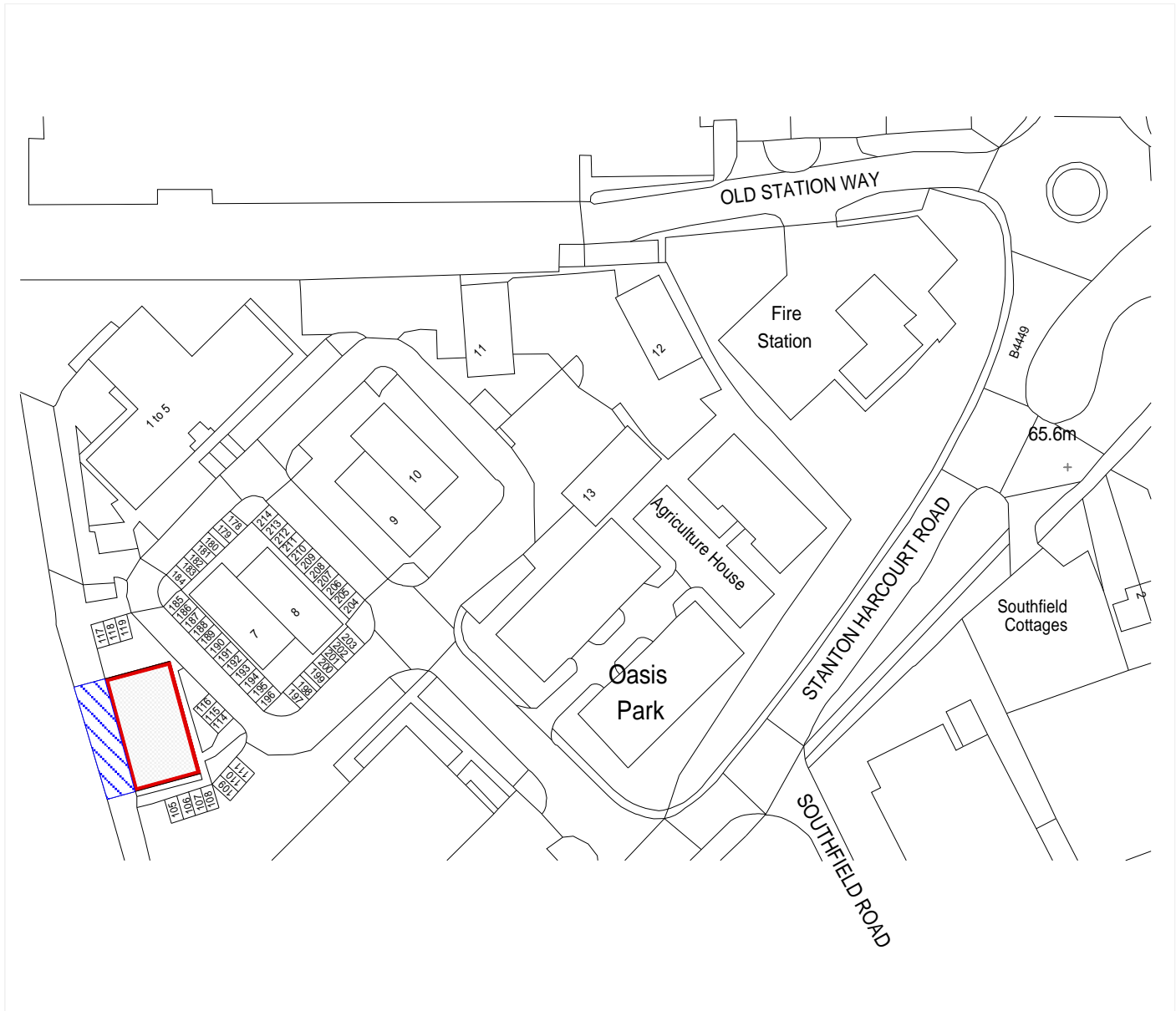
GROUND FLOOR



FIRST FLOOR

APPROX. GROSS INTERNAL AREA *
6290 Ft² - 584.34 M²

<p>Property Details: UNIT 6 OASIS BUSINESS PARK EYNSHAM OXFORDSHIRE OX29 4TP</p>		<p>Surveyed and Drawn By: BKR Hideaway Work Space 1 Empire Mews London SW16 2BF</p>
<p>SCALE 1:200 @ A4</p>	<p>Tel: 0345 257 2023 info@bkrfloorplans.co.uk www.bkrfloorplans.co.uk</p>	
<p>Plans Drawn: 26.11.2019</p>		<p>© BKR 2019</p>



Property Details:
UNIT 6
OASIS BUSINESS PARK
EYNHAM
OXFORDSHIRE
OX29 4TP

SCALE
1:1250 @ A4

Plans Drawn: 26.11.2019



Surveyed and Drawn By:

 Hideaway Work Space
 1 Empire Mews
 London
 SW16 2BF
 Tel: 0345 257 2023
info@bkrfloorplans.co.uk
www.bkrfloorplans.co.uk
 © BKR 2019